

Controls tailored to your needs

miniWDS 19"/miniMERC v2.0/MERC v4.6



Müller Extrusion Retrofit Control

Equipment	miniWTC19"	miniMERC v2.0	MERC v4.6
General			
Display size	5,7"	7"	21,5 - 24"
Touch operation	•	•	•
2D/3D graphic displays	-	•	•
Trend curves	-	-	•
Recipe management	•	•	•
User control	•	•	•
Extended user control	-	-	•
Online help	-	-	•
Language options	•	•	•
Remote maintenance	-	Optional	•
Heating			
Maximum no. of heating zones	-	40	220
> Head zones	-	20	60
> Extruder zones	-	10	20
Energy-saving heating ramps	-	•	•
Set-point switchover	-	•	•
Heating current monitoring	-	•	•
Heating circuit monitoring	-	•	•
Timer	-	•	•
Extruder control			
Maximum no. of extruders	-	2	8
Start-up programs	-	-	•
Purge programs	-	-	•
Speed monitoring	-	•	•
Melt pressure monitoring	-	•	•
Screen changer control	-	•	•
Hopper slide control	-	•	•
Hopper monitoring	-	•	•
Screw tip cooling	-	-	•
Synchronous adjustment	-	-	•
Process overview	-	-	•
Parison manipulation			
Maximum no. of channels	2	3	18
WTC	•	•	•
PWTC	-	•	•
RWTC	-	-	•
ACCU	-	•	•
Support air	•	•	•
Profile points per channel	100	100	100
Marker points per channel	100	100	100
Interpolated points per channel	400	400	400
Parison length control	•	•	•

• standard - not available



W. MÜLLER GmbH

Am Senkelsgraben 20
53842 Troisdorf-Spich
Germany
Phone (+49) 2241 9633 - 0
Fax (+49) 2241 9633 - 96
E-Mail info@w-mueller-gmbh.de

www.mueller-ebm.com



W. MÜLLER USA Inc.

1163 Suffield Street
Agawam, MA 01001
USA
Phone (+1) 413 787 - 0664
Fax (+1) 413 787 - 0642
E-Mail info@mullerheads.com

www.mullerheads.com



MERC-Systems

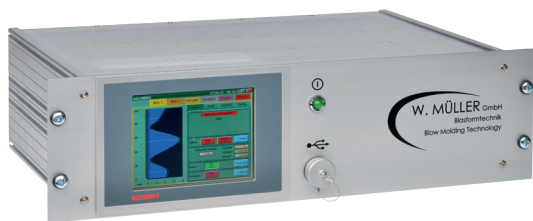
To provide complete control of blow molding processes, we offer several control concepts customized for our extruder and extrusion head systems.

We deliver fully equipped electrical cabinets, including control panels, adding to the functions of an existing machine control system.

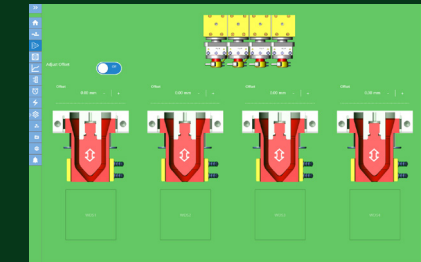
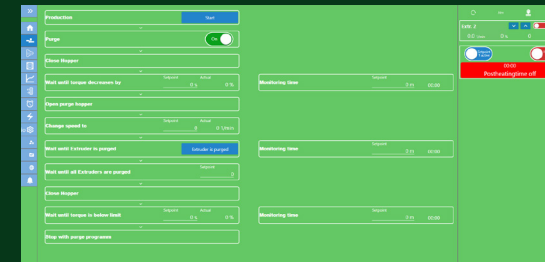
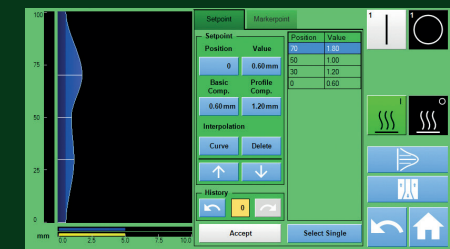
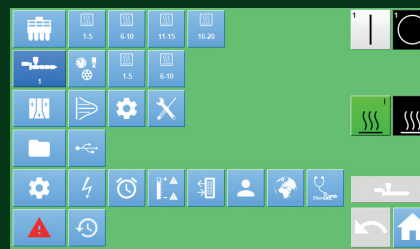
Our MERC (Müller Extrusion Retrofit Control) is available for new blow molding machines and as a retrofit of existing equipment. The MERC provides easy-to use, self-explanatory operator guidance and assures complete control at all times.

miniWTC 19"

This is a simple, compact and easy to install solution to replace 19" rack pro-grammers that are defective, or no longer supported by their manufacturers. Initially designed to replace MOOG pro-grammers, all connections match those of the original Moog labeling. However, other programmers from manufacturer-s such as PSG, Hunkar, Fermit, etc. can be replaced with the miniWTC 19" just as easily. An exchange will only take 30 minutes at the most.



miniWTD 19"



MERC v4.6.7

The advantages of the miniWTC 19"

- 2 separate WTC channels
- 100 Profile points (400 interpolated)
- 100 marker points
- Graphical actual value display (Quality control)
- Tolerance monitoring (Quality control)
- Parison length control
- Recipe management
- Language options



miniWTC 19" Rear Panel

miniMERC v2.0

As the name suggests, the miniMERC is a MERC system with fewer features for simpler retrofits. The mini-MERC system consists of a 7" touch screen PC in a mobile enclosure, which still provides all basic functions required for the extrusion. A highlight of the miniMERC are screen pages with 3D graphics, matching exactly the extrusion head and the extruders being

controlled. This simplifies operation considerably.

Using its wall thickness control (WTC) capabilities, the miniMERC can also serve as a compact and cost-effective retrofit, replacing any outdated rack-style parison programmer.

MERC v4.6

The MERC was designed especially for multilayer retrofits and provides control of all key extrusion functions. Thanks to its 21,5-24" TFT screen, all required process data can be viewed simultaneously. Again, a highlight of the MERC system is its ability to display 3D graphics of the extrusion head and the extruders simplifying even the operation of complex retrofit solutions.

With its high-quality, intuitive user inter-face, the MERC lends itself not only to retrofits, but is also supplied as an addition to the control systems of new machines if a clear separation between extrusion and machine functions is desired.