

Truly Performing



Service Initiative 2023

Spare Part Packages // Rebate Programs //

Maintenance Contracts // Refurbishments

02/01/2023



Truly Performing



Spare Part Packages

Avoid downtime - The right part on hand when you need it

- Independence on long lead times
- Less unscheduled downtime
- Reduced risk of production losses
- Improved Equipment Reliability
- Improved Overall Performance
- Fewer emergencies



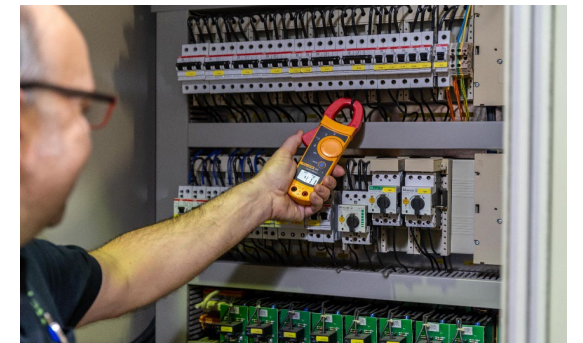
Truly Performing



Maintenance Contracts

If you don't schedule time for Maintenance, your equipment will schedule it for you

- Planned downtime vs. unplanned
- Make budgeting easier and plan for maintenance
- Earlier countermeasures possible
- Expert Technicians at your disposal
- Emergency support when you need it
- Increased equipment reliability
- Significant savings up to 31% vs. non-contract inspection
- Reduced rates for repair services



Truly Performing



Refurbishments

Oldie but Goldie! W. Müller certified “As-New Performance”

- Increased equipment life cycle
- Higher Product Quality
- Less Scrap
- Improved performance
- Increased Efficiency
- Energy Savings
- Renewed Warranty



Truly Performing



Retrofits

Transform your existing machine from Mono to Multilayer application

- Increased equipment life cycle
- New Opportunities – Mono to Multilayer
- Whole Extrusion from ‘the same house’
- New Die Head and Extruders vs. New Machine
- Improved Process Visibility
- Increased Efficiency
- Energy Savings



Truly Performing



Lab

- Use our one cavity machine
- Avoid occupying your production capacities
- We have a wide variety of processing capabilities
- Flexibility from one up to 7-layer structures
- Switchable PCR / regrind layer positioning
- Making the „imposible“ possible for you!



Truly Performing



What can we do for you?

- Sampling
- Material tests
- Small scale production
- Support for new and future developments
- On-site assembly and commissioning
- Support during the changeover from virgin materials to PCR materials



Want to learn more about
our lab equipment?
Scan the code!