



ReCo with Black Main Layer



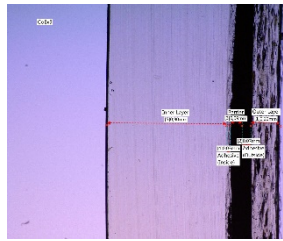
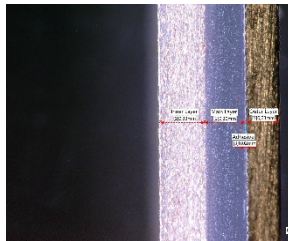
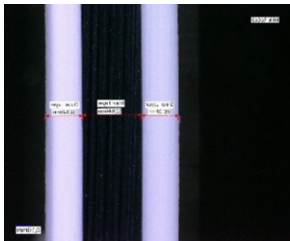
CoEx 4 with Special Effect



CoEx 5



CoEx 6



Outer Layer: HDPE +
Masterbatch: 8%
Fibaplast White
Main Layer: HDPE +
Masterbatch: 2%
Fibaplast Black
Inner Layer: HDPE +
Masterbatch: 4%
Fibaplast White

Containers with a black middle layer absorb both visible and UV light. This keeps products fresh and extends their shelf life.

Outer Layer: EVOH
Adhesive Inner Layer:
PP Adhesive
Main Layer: PP
Inner Layer: PP +
Masterbatch: 15%
Fibaplast Red

In this bottle, EVOH in the outer layer is giving a Deep Gloss Special Effect.
CoEx 4 is a commonly used solution for agrochemical applications and fresh juices.

Outer Layer: MDPE + 50%
Compound Fibafekt
Glittering Blue
Adhesive Outer Layer: PE
Adhesive + **Masterbatch:**
2% Fibaplast Black
Barrier: EVOH
Adhesive Inner Layer: PE
Adhesive
Inner Layer: LDPE

CoEx 5 is used for sensitive food and pharmaceutical applications, where recycled materials cannot be used.

Outer Layer: MDPE + 50%
Compound Fibafekt Copper
Main Layer: LDPE + Regrind
+ **Masterbatch:** 2%
Fibaplast Black
Adhesive Outer Layer: PE
Adhesive
Barrier: EVOH
Adhesive Inner Layer: PE
Adhesive
Inner Layer: LDPE

CoEx 6 is a great solution for food and chemical applications, protecting the contents and incorporating recycled materials.

Co-Extrusion allows diverse applications for a wide range of products. Regrind layers save resources and provide cost savings, while barrier layers protect your content and the environment and extend the shelf life.

www.w-mueller-gmbh.de

